

Lookout Lake Park Management Plan - Phase 1

Welcome

1 / 5 More at: <https://letstalkcolwood.ca/ourparks>

Learn a bit about the project before you begin!

Welcome

Please take a moment to share your ideas about Lookout Lake Park and help us better understand the issues that are important to you.



a lake surrounded by trees

This questionnaire includes 10 questions and will take about 10 minutes to complete. Public input is integral to the development of a Park Management Plan. Your input will be used to develop a draft overall vision for the park, as well as key recommendations (to be explored during the next planning phase).



icon

Lookout Lake Park Management Plan - Phase 1

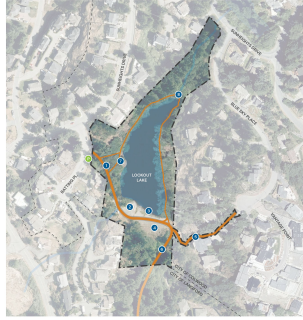
The City of Colwood is beginning the Park Management Plan process for Lookout Lake Park, and we would like your input! With your help, the Lookout Lake Park Management Plan will guide planning decisions about recreational amenities, park infrastructure, and environmental considerations. We heard your ideas during the recent Parks and Recreation Master Plan process (2020/21). Now we'd like to dig a little deeper to confirm issues, opportunities, and preferences for the Park Management Plan.

MAP OF THE PARK TODAY

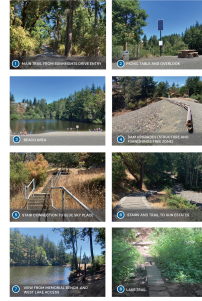
Click [here](#) to view a larger version of this map online.

[Privacy - Terms](#)

LOOKOUT LAKE PARK



EXISTING PARK ELEMENTS



map

This section asks for information about park vision, visitation / use, and issues and opportunities

Park Vision and Land Use

Park Vision and Use

Please share information about how you use the park today, and your vision for the future!

Park Visitation

Park Visitation

Please share with us how you visit Lookout Lake Park

How frequently do you visit Lookout Lake Park?

- More than once a week
 - Weekly
 - Monthly
 - 2 or 3 Times a Season
 - Once
 - Never
 - Other
-

Did you select "other" for the question above? Please specify frequency below.

How do you travel most often to Lookout Lake Park?

- Walking
 - Biking
 - Taking the Bus
 - Driving my Car
 - Other
-

Did you choose "other" for the question above? Please specify how you travel to the park below.

Park Use

Park Use

What activities do you typically participate in at Lookout Lake Park?

Please select all that apply.

- Swimming in the Lake
- Fishing
- Walking on the Trails
- Walking my Dog
- Picnicking
- Other

Did you select "other" for the question above? Please specify which other activities you participate in below.

Issues and Opportunities

Park Issues and Opportunities

What do you feel are the key issues and opportunities for Lookout Lake Park?

From the list below, select all that apply.

- Lack of park wayfinding / signage
- Limited park elements at entries (kiosk signs, bike parking etc.)
- Insufficient washroom / changeroom facilities
- Insufficient covered / shaded areas
- Concerns about increased volume of use
- Concerns about undesired noise in the evenings
- Parking is limited
- Access stairs are aging and may warrant replacement
- Presence of invasive plant species in habitat areas
- The lake trail is not stable in some areas
- Impacts on sensitive habitat areas

Can you think of other issues or opportunities that were not listed above? Please share them below.

Developing a Park Vision

Developing a Park Vision

A vision statement provides a planning and design framework to guide key recommendations.

If you could list any three words to describe your future vision for Lookout Lake Park, what would they be?

What do you love most about Lookout Lake Park?

Park Amenity Priorities

3 / 5

Rank 3 of the 5 items above the line in your preferred order. Other ideas? List them on the final page.

Park Amenity Priorities

Park Activities and Amenities

*Through the recent Parks and Recreation Master Plan process (2020/21), potential park upgrades were identified for Lookout Lake Park. From the list provided, which would you most like to see?
Note: locations to be coordinated with dam upgrades.*

New Park Furnishings

Covered Picnic Area

Trail Upgrades

Floating Dock

New Washroom / Changeroom Building

New Park Furnishings



a group of benches sit in a park

Additional park benches, waste / recycling bins. Character of furnishings to complement natural setting.

Covered Picnic Area



a wooden structure in a park

Image Credit: Local Practice

Addition of a covered picnic structure with picnic tables

Trail Upgrades



a boy walking on a wooden bridge

Image Credit: MMarsolis

Improvements to stair access and lake nature trail, including new boardwalks and stabilization in key areas for safety.

Floating Dock



a group of people standing on a dock over a body of water

Image Credit: Habitat Conservation Trust Foundation

Addition of small-scale floating dock for fishing or nature appreciation. Separate from the main beach area

New Washroom / Changeroom Building



a small wooden shed in a forest

Image Credit: Toilet Tech

Addition of a prefab park washroom building with changeroom facilities.

Park Management Rating

4 / 5

Please rate your level of support for each item. Other ideas? Please leave them on the final page

Park Management Rating

Which environmental and usage considerations do you feel are most important to integrate and address in the Park Management Plan?

Please give your input on the items you feel most strongly about.

Environmental Considerations

Which environmental considerations do you feel warrant further development as part of the Park Management Plan process? Provide your input!

Please rate your level of support for the following environmental management strategies (5 stars = strongly support, 1 star = do not support).

Vegetation Protection / Enhancement

Retention of existing mature trees and vegetation, and planting of new trees and native plants including pollinator-friendly species

1 Star 2 Stars 3 Stars 4 Stars 5 Stars

Removal of Invasive Species

Removal of invasive species within riparian and natural areas to foster biodiversity

1 Star 2 Stars 3 Stars 4 Stars 5 Stars

Restoration of Habitat Areas

Focus on riparian areas including water quality impacts and erosion from recreational use

1 Star 2 Stars 3 Stars 4 Stars 5 Stars

Green Stormwater Management

Integration of green stormwater management strategies (e.g. minimizing impermeable surfaces, tree and understory planting to slow runoff)

1 Star 2 Stars 3 Stars 4 Stars 5 Stars

Fostering Park Stewardship

Opportunities for environmental programming and education as well as interpretive and educational signage.

1 Star 2 Stars 3 Stars 4 Stars 5 Stars

Swimming and Fishing Considerations

Three potential strategies are provided, which other communities have implemented. Which of these do you feel is most appropriate for swimmers and fishers using Lookout Lake? Provide your input! Other thoughts? List them on the final page.

A key issue that was identified in the recent Parks & Recreation Master Plan process was swimmers and fishers using the lake concurrently. Rate your level of support for the following potential strategies (5 stars = strong support, 1 star = low support).

Time of Day Option

Plan a separate schedule for swimmers and fishers to use the lake during peak season, to encourage safe use for all.

1 Star 2 Stars 3 Stars 4 Stars 5 Stars

Separate Area Option

Delineate separate areas for swimmers and fishers. Install a new floating dock on the north end of the lake for fishers (with upgraded trail access). Limit fishing to the south half of the lake / beach area only, if both users are present.

1 Star 2 Stars 3 Stars 4 Stars 5 Stars

Keep the Status Quo

No further action taken

1 Star 2 Stars 3 Stars 4 Stars 5 Stars

Tell us a bit about yourself. Please click finish when you are done. Thanks for your input!

Final Questions (Optional)

What area do you live in?

- CFB Esquimalt
 - Colwood Corners
 - Hatley Park
 - Latoria (Ocean View)
 - Royal Bay
 - Royal Roads
 - Seaside (Lagoon + Royal Beach)
 - Triangle Mountain
 - Wishart North
 - Wishart South
 - In Colwood (unsure neighbourhood)
 - Outside Colwood (within the CRD)
 - Elsewhere on Vancouver Island
 - Other
-

If you chose "other", answer below

In what age group are you?

- 0 to 19 years
 - 20 to 29 years
 - 30 to 39 years
 - 40 to 49 years
 - 50 to 59 years
 - 60 to 69 years
 - 70 to 79 years
 - 80 years and over
-

Do you have any further ideas?

Thank You!

Thank you! Your input will help frame planning directions to be explored further in Phase 2

Thank You

Thank you for your input!

Thank you for your input so far! It has been recorded. Please answer a few optional questions. Your private information will be kept private. Please share this survey and spread the word!

For more information...

For more information, visit the City of Colwood [website](#) or email your ideas to ourparks@colwood.ca

Thanks for participating!

You can now close this browser.

-